

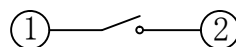
H
1.8
2.0
2.5

主要技术规格:

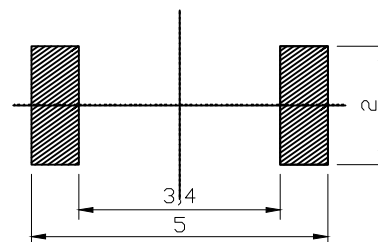
1. 额定值: 50mA DC12V
2. 接触电阻: 100mΩ
3. 操作力: 160gf±50gf
4. 行程: 0.20±0.1mm
5. 绝缘电阻: 100MΩ
6. 抗电强度: 250V 50HZ 1Min.
7. 寿命: 10万Cycles

材料:

- A本体: LCP耐温280 (黑色)
- B卡件: 黄铜 (镀银)
- C弹片: 不锈钢 (镀银)
- D防尘膜: PI耐温280 (黄色)
- E按钮: LCP耐温280 (黑色)
- F盖板: 不锈钢 (清洗)



电路图



PCB. 焊接图

HAOFU ELECTRONICS TECHNOLOGY CO.,LTD

COPYRIGHT RESERVED,PLEASE DO NOT COPY.

PART NAME		SWITCH		DRAWING		Y,C,ZHANG	DWG.No.	SBICL
PART NO.		TD-1807SN-H		CHECK		G.C.Chen	REV.	A1
	UNIT :	TOLERANCE OTHERWISE	UP TO 5	±0.2	ANGLE	APPROVAL	DATE	14-03-2013
	mm		ABOVE 5~30	±0.3			0°±3'	PAGE
			ABOVE 30	±0.5	SCALE		2:1	
			ANGLE	±3'				