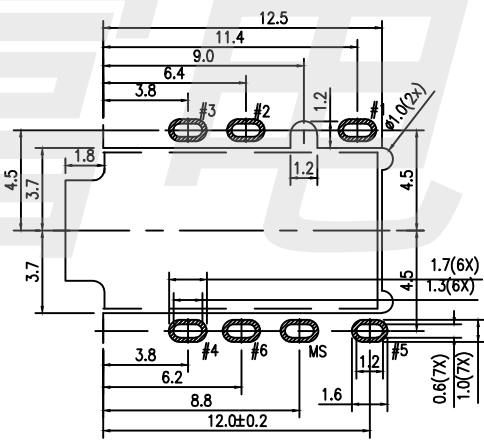
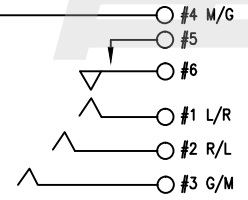
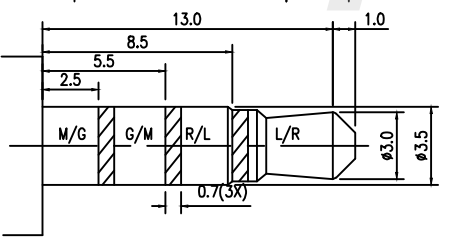
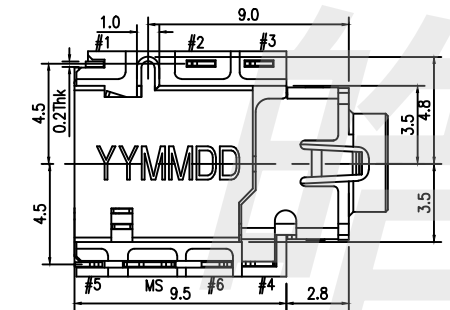
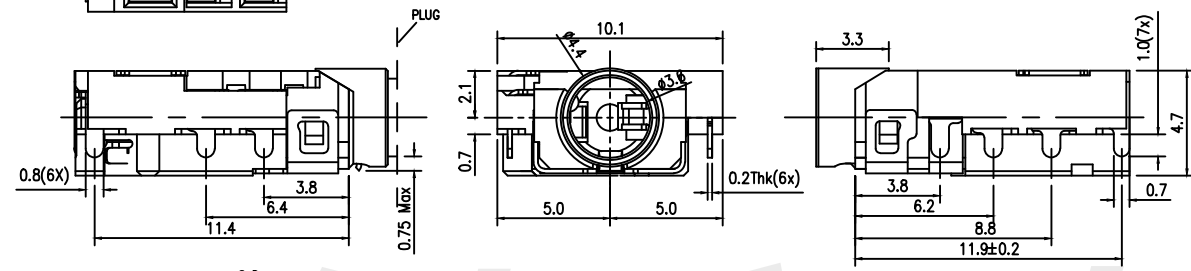
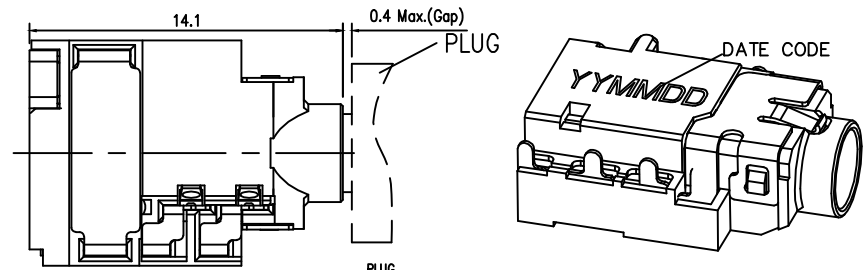
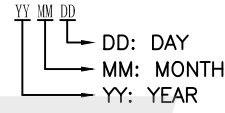


**RoHS  
Compliant**

SYMBOL	REVISION	APPROVAL	DATE

**SPECIFICATIONS**

- ELECTRICAL CHARACTERISTICS:
  - 1-1.RATING: DC 12V 1A
  - 1-2.CONTACT RESISTANCE: 30mΩ MAX(INITAL)
  - 1-3.DIELECTRIC WITHSTANDING VOL TAGE: 500V AC FOR ONE MINUTE
  - 1-4.INSULATION RESISTANCE: 100MΩ MIN,MEASURED BY 500V DC
- MECHANICAL CHARACTERISTICS:
  - 2-1.INSERTION FORCE: 0.5KG-2.2KG
  - 2-2.WITHDRAWAL FORCE: 0.5KG-2.0KG
- LIFE TEST:5,000 CYCLES MIN
- PACKING:TAPE & REEL
- FOR HAND SOLDERING LEAD FREE PROCESS
- PRINTED DATE CODE"YY MM DD" ON TOP OF CONNECTOR



No.	DESCRIPTION	MATERIAL	PLATING
1	TERMINAL #1	C5210	1u" Au PLATED
2	TERMINAL #2	C5210	1u" Au PLATED
3	TERMINAL #3	C5210	1u" Au PLATED
4	TERMINAL #4	C5210	1u" Au PLATED
5	TERMINAL #5	C5210	1u" Au PLATED
6	TERMINAL #6	C5210	1u" Au PLATED
7	TERMINAL MS	C2680	Ni PLATED
8	INSULATOR	PPA UL 94V0	BLACK
9	HOUSING	PPA UL 94V0	BLACK

HAOFU ELECTRONCS TECHNOLOGY CO., LTD

COPYRIGHT RESERVED,PLEASE DO NOT COPY.

PART NAME		PHONE JACK(STEREO)		DRAWING		DWG.No.	
PART NO.		PJ-597DS		CHECK		REV. A	
UNIT : mm	TOLERANCE OTHERWISE	UP TO 5	±0.2	ANGLE	APPROVAL		
		ABOVE 5~30	±0.3		DATE		
		ABOVE 30	±0.5	0°±5'	SCALE	3:1	PAGE
		ANGLE	±3'				1 OF 1