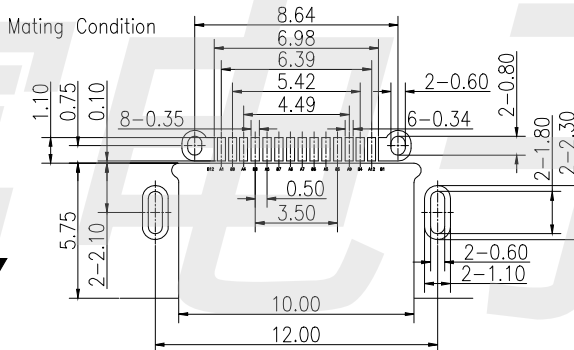
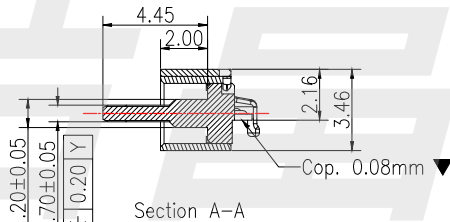
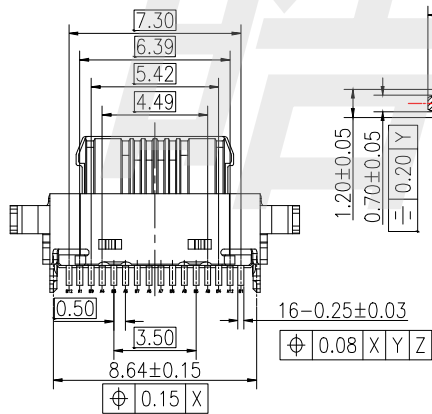
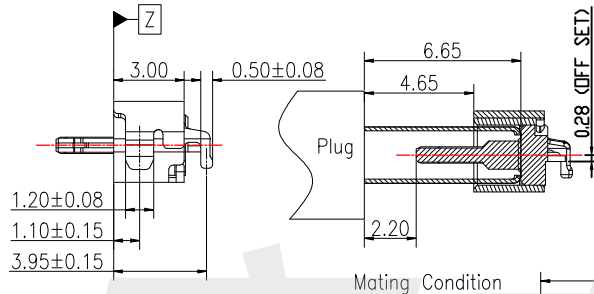
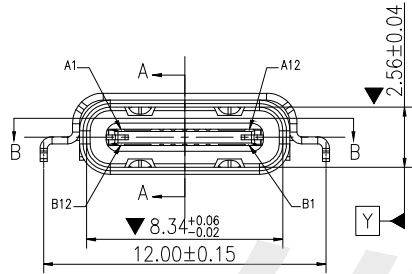
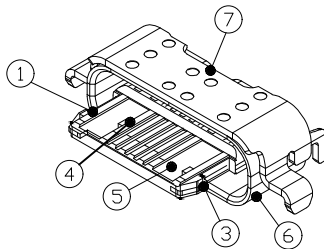


- NOTES:
- ELECTRICAL CHARACTERISTICS;
 - CONTACT CURRENT RATING: 8A
 - CONTACT RATED VOLTAGE: 30VAC;
 - CONTACT RESISTANCE;
 - INITIAL: V-BUS/GND PIN 30mohm Max.
 - OTHER CONTACTS PIN 40mohm Max.
 - AFTER DURABILITY: CHANGE OF +10mohm.
 - INSULATION RESISTANCE: 100 Mohm Min.
 - WITHSTANDING STRENGTH: 100V AC FOR 1 MINUTE.
 - MECHANICAL CHARACTERISTICS;
 - INSERTION FORCE: 5~20N.
 - EXTRACTION FORCE: 8~20N.
 - DURABILITY: 10K CYCLES.
 - DIMENSIONS MARKED WITH ☆ MUST BE CPK MEASURED BY QC AND IPQC
 - RoHS OR HF COMPLIANT.



A12	GND	B1	GND
A9	VBUS	B4	VBUS
A8	SBU1	B5	CC1
A7	Dn1	B6	Dp1
A6	Dp1	B7	Dc1
A5	CC1	B8	SBU1
A4	VBUS	B9	VBUS
A1	GND	B12	GND
PIN NO.	SIGNAL NAME	PIN NO.	SIGNAL NAME



7	MAIN SHELL	1	SUS304-1/2H;T=0.30mm	OVER ALL: 50u"Min. Ni UNDERPLATED.
6	SUB SHELL	1	SUS304-1/2H;T=0.30mm	
5	OVER MOLDING	1	PA46 NYLON BLACK	UL94V-0
4	FIRST MOLDING	1	PA46 NYLON BLACK	UL94V-0
3	SHIELDING PLATE	1	SUS301-H;T=0.20mm	OVER ALL: 50u"Min. Ni PLATED
2	BOTTOM CONTACT	1	C18400-R480;T=0.25mm	OVER ALL: 50u"Min. Ni UNDERPLATED. CONTACT AREA: 3u" Min. Au PLATED. SOLDER TAIL: 1u"Min. Au PLATED.
1	TOP CONTACT	1	C18400-R480;T=0.25mm	
ITEM	PART NAME	Q'TY	MATERIAL	FINISH

HAOFU ELECTRONCS TECHNOLOGY CO.,LTD

PART NAME		CONNECTOR		DRAWING	Y,C,ZHANG	DWG.No.	SBICL
PART NO.		TYPE C 16PIN Por7 REV 8A		CHECK	G.C.Chen	REV.	A1
UNIT :	mm	TOLERANCE	UP TO 5	ANGLE	APPROVAL	DATE	PAGE
		OTHERWISE	ABOVE 5~30				
			±0.2	0°±3'			1 OF 1
			±0.3				
			±0.5				
			±3'				

COPYRIGHT RESERVED,PLEASE DO NOT COPY.