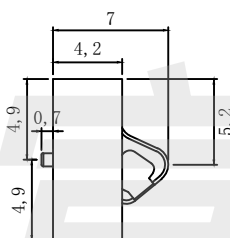
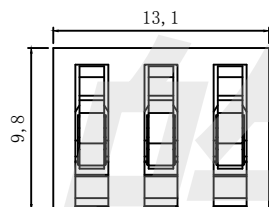
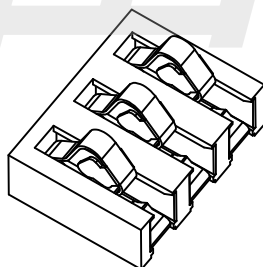
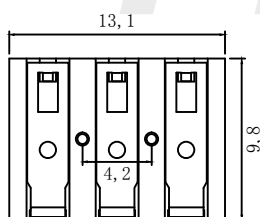


| 尺寸范围  | 未注公差值 |
|-------|-------|
| 0~3   | ±0.1  |
| 3~6   | ±0.15 |
| 6~9   | ±0.2  |
| 9~12  | ±0.25 |
| 12~15 | ±0.3  |



### SPECIFICATIONS

- ELECTRICAL CHARACTERISTICS:
  - RATING: DC 12V 2A
  - CONTACT RESISTANCE: 20mΩ MAX(INITIAL)
  - DIELECTRIC WITHSTANDING VOLTAGE: 500V AC FOR ONE MINUTE
  - INSULATION RESISTANCE: 100MΩ MIN, MEASURED BY 500V DC
- LIFE TEST: MECHANICAL LIFE TEST 10,000 CYCLES.



|     |             |      |          |       |        |
|-----|-------------|------|----------|-------|--------|
| 2   | 1#脚         | 3    | 不锈钢      | 镀金    | 国产     |
| 1   | 底座          | 1    | LCP      | 白色    | 国产     |
| 序号  | 名称          | 数量   | 材料       | 颜色    | 备注     |
| NO. | DESCRIPTION | Q'TY | MATERIAL | COLOR | REMARK |

HADFU ELECTRONICS TECHNOLOGY CO.,LTD

COPYRIGHT RESERVED PLEASE DO NOT COPY.

| PART NAME    |                        | CONNECTOR  |      | DRAWING | Y,C,ZHANG | DWG.No. | SBICL      |
|--------------|------------------------|------------|------|---------|-----------|---------|------------|
| PART NO.     |                        | BC3P42H70D |      | CHECK   | G.C.Chen  | REV.    | A1         |
| UNIT :<br>mm | TOLERANCE<br>OTHERWISE | UP TO 5    | ±0.2 | ANGLE   | APPROVAL  | DATE    | 26-07-2013 |
|              |                        | ABOVE 5~30 | ±0.3 |         |           |         |            |
|              |                        | ABOVE 30   | ±0.5 | 0°±3'   | SCALE     | PAGE    | 1 OF 1     |
|              |                        | ANGLE      | ±3'  |         |           |         |            |