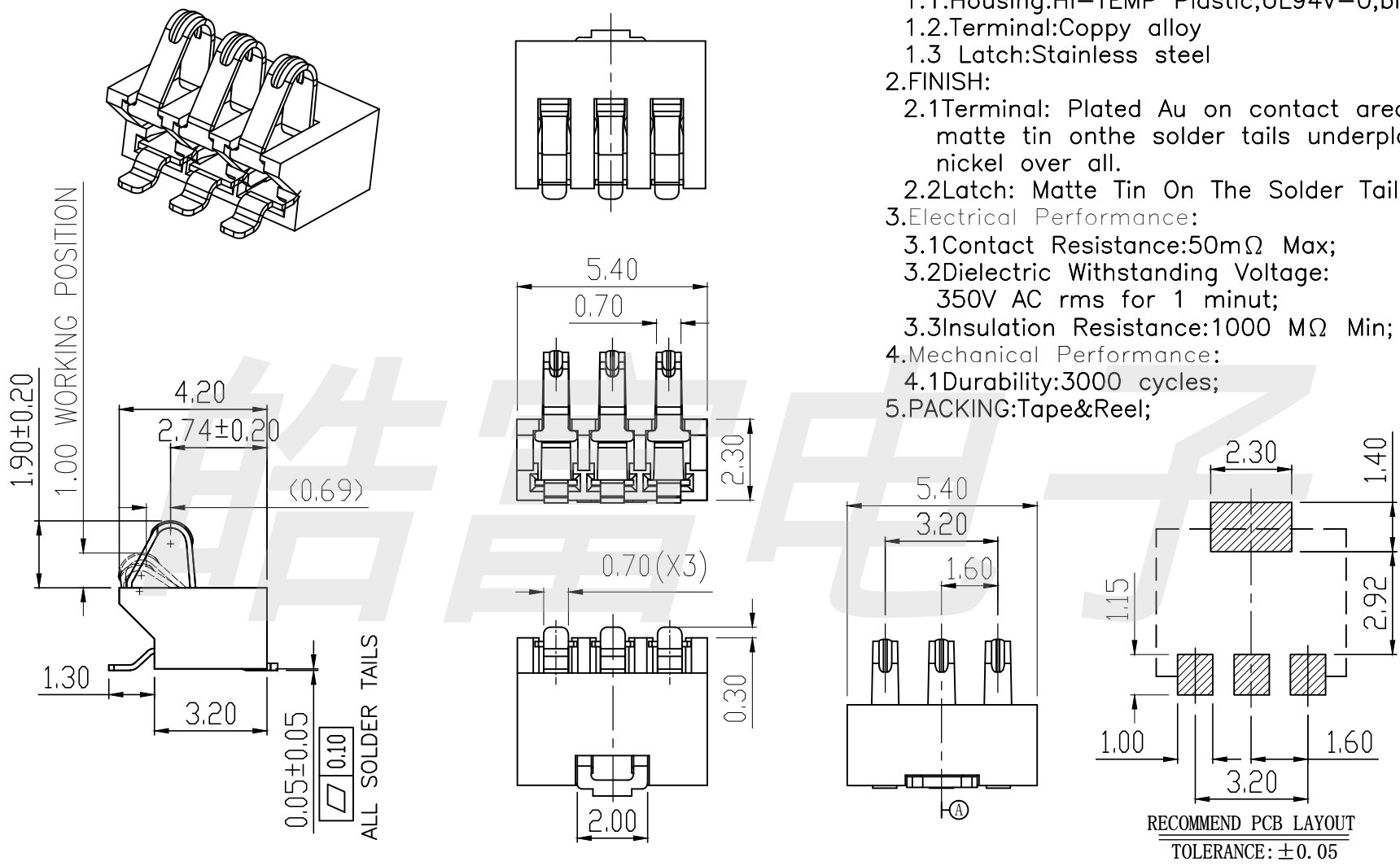


- 1.MATERIAL:
 - 1.1.Housing:HI-TEMP Plastic,UL94V-0,black;
 - 1.2.Terminal:Coppo alloy
 - 1.3 Latch:Stainless steel
- 2.FINISH:
 - 2.1Terminal: Plated Au on contact area, matte tin on the solder tails underplated nickel over all.
 - 2.2Latch: Matte Tin On The Solder Tails.
- 3.Electrical Performance:
 - 3.1Contact Resistance:50mΩ Max;
 - 3.2Dielectric Withstanding Voltage: 350V AC rms for 1 minut;
 - 3.3Insulation Resistance:1000 MΩ Min;
- 4.Mechanical Performance:
 - 4.1Durability:3000 cycles;
- 5.PACKING:Tape&Reel;



HAOFU ELECTRONCS TECHNOLOGY CO.,LTD

COPYRIGHT RESERVED,PLEASE DO NOT COPY.

PART NAME		CONNECTOR		DRAWING	Y,C,ZHANG	DWG.No.	SBICL
PART NO.		BC3P16H42		CHECK	G.C.Chen	REV.	A1
UNIT : mm	TOLERANCE	UP TO 5	±0.2	APPROVAL		DATE	06-07-2015
	OTHERWISE	ABOVE 5~30	±0.3			PAGE	1 OF 1
		ABOVE 30	±0.5	SCALE	2:1		
		ANGLE	±3°				