

SPECIFICATIONS

1. ELECTRICAL CHARACTERISTICS:

1-1.RATING: DC 20V 3A max

1-2.CONTACT RESISTANCE: 20mΩ MAX(INITAL)

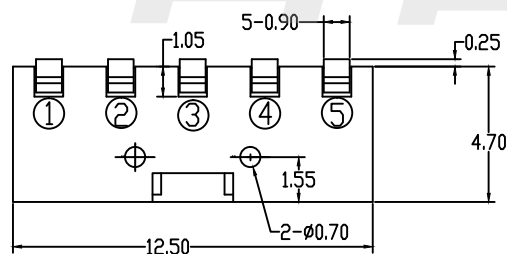
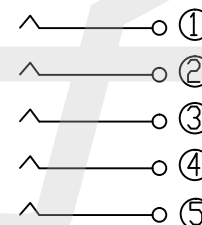
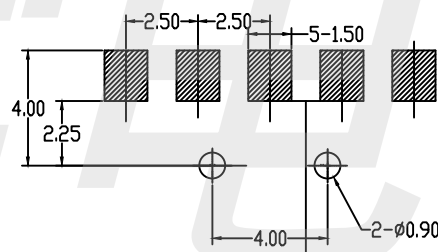
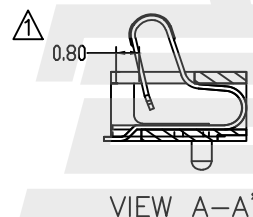
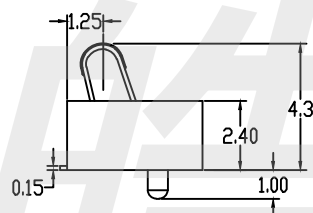
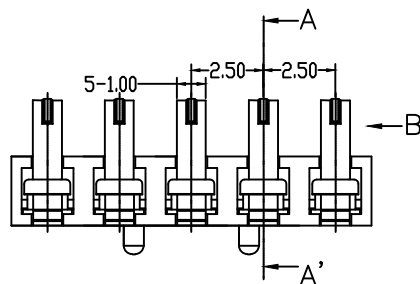
1-3.DIELECTRIC WITHSTANDING VOLTAGE:

500V AC FOR ONE MINUTE

1-4.INSULATION RESISTANCE: 100MΩ MIN,
MEASURED BY 500V DC

2. LIFE TEST:MECHANICAL LIFE TEST 10,000 CYCLES MIN

3. TEMPERATURE RISE : 30°C MAX



P.C.B LAYOUT

CIRCUIT

2	HOUSING	LCP	1	BLACK
1	CONTACT TERMINAL	BeCu	3	3u"Au PLATED
NO.	PARTS	MATERIAL	QTY.	FINISHING

HAOFU ELECTRONICS TECHNOLOGY CO.,LTD

COPYRIGHT RESERVED,PLEASE DO NOT COPY.

PART NAME

CONNECTOR

DRAWING

Y,C,ZHANG

DWG.No.

SBICL

PART NO.

BC5P25H43

CHECK

G.C.Chen

REV.

A1

UNIT :
mmTOLERANCE
OTHERWISEUP TO 5
ABOVE 5 ~30
ABOVE 30
ANGLE±0.2
±0.3
±0.5
±3°

0°±3°

APPROVAL

SCALE

2:1

DATE

PAGE

28-06-2019

1 OF 1