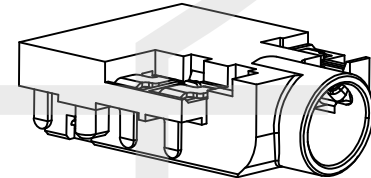
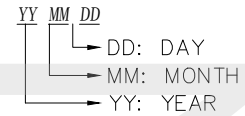


SYMBOL	REV.	REVISION	APPROVAL	DATE

RoHS Compliant
Halogen Free

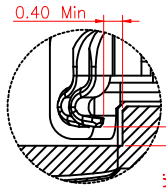
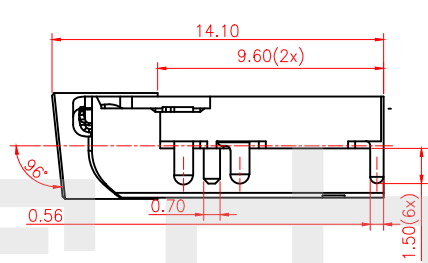
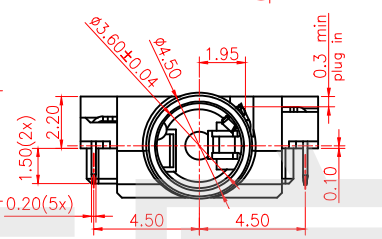
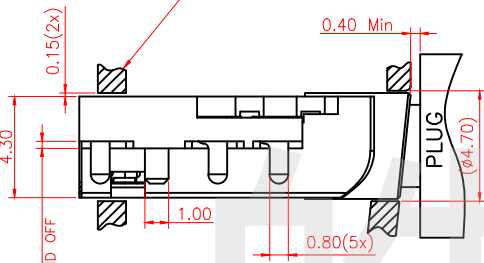
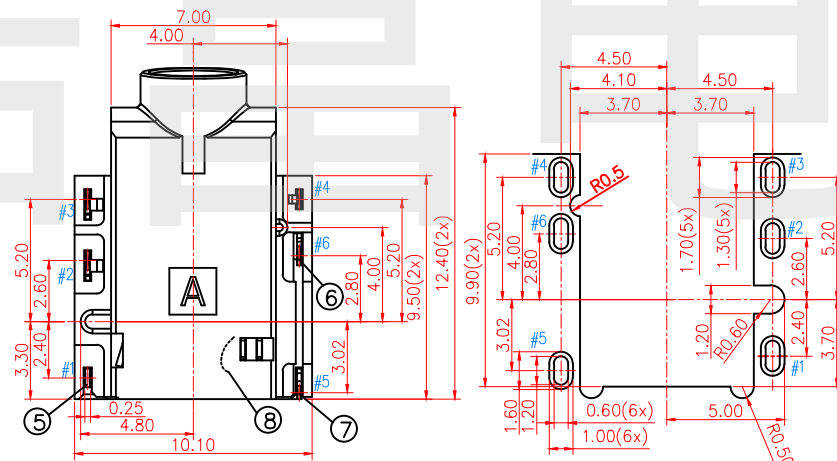
SPECIFICATIONS

- ELECTRICAL CHARACTERISTICS:
 - 1-1.RATING: DC 12V 1A
 - 1-2.CONTACT RESISTANCE: 50mΩ MAX(INITIAL)
 - 1-3.DIELECTRIC WITHSTANDING VOLTAGE: 500V AC FOR ONE MINUTE
 - 1-4.INSULATION RESISTANCE: 100MΩ MIN,MEASURED BY 500V DC
- MECHANICAL CHARACTERISTICS:
 - 2-1.INSERTION FORCE: 0.8Kg_f-3.0Kg_f;
2.5Kg_f MAX(AFTER LIFE TEST)
 - 2-2.WITHDRAWAL FORCE: 0.6Kg_f-1.8Kg_f;
0.5Kg_f min(AFTER LIFE TEST)
- LIFE TEST:2,000 CYCLES MIN
- PACKING:TAPE & REEL
- FOR HAND SOLDERING LEAD FREE PROCESS
- PRINTED DATE CODE"YY MM DD ON TOP OF CONNECTOR



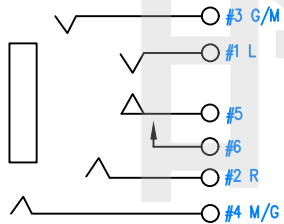
No.	DESCRIPTION	MATERIAL	PLATING & COLOR
1	HOUSING	PA4T UL94V-0	BLACK
2	TERMINAL #4	C5210 0.2T	1u" Au PLATED ON CONTACT AREA; 1u" Au PLATED ON SOLDER AREA; ALL OVER 50u" Ni Min.
3	TERMINAL #3	C5210 0.2T	
4	TERMINAL #2	C5210 0.2T	
5	TERMINAL #1	C5210 0.25T	
6	TERMINAL #6	C5210 0.2T	
7	TERMINAL #5	C5210 0.2T	
8	INSULATOR	PPA UL94V-0	BLACK

P.C.B LAYOUT
TOP VIEW

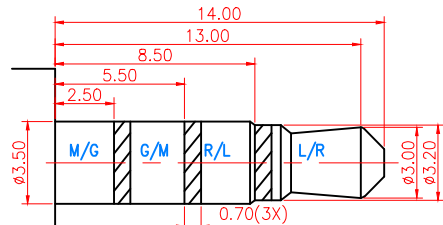


DETAIL: A
SCALE: 2:1

RECOMMENDED LIMIT
SUPPORT STRUCTURE



SCHEMATIC



MATING PLUG

HAOFU ELECTRONCS TECHNOLOGY CO., LTD

PART NAME		STEREO JACK (4 POLES)		DRAWING		DWG. No.	
PART NO.		PJ-597DS-X		CHECK		REV.	
UNIT : mm	TOLERANCE UNLESS OTHERWISE SPECIFIED	X ± 0.3	ANGLE ±2°	APPROVAL	DATE		
		X.X ± 0.25		SCALE	PAGE		
		X.XX ± 0.2			3:1	1 OF 1	

COPYRIGHT RESERVED, PLEASE DO NOT COPY.