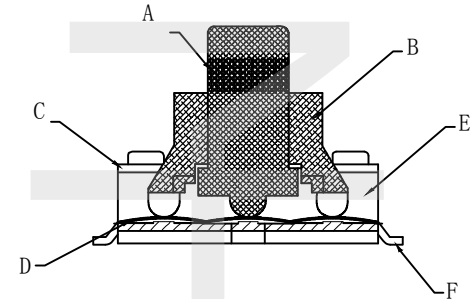
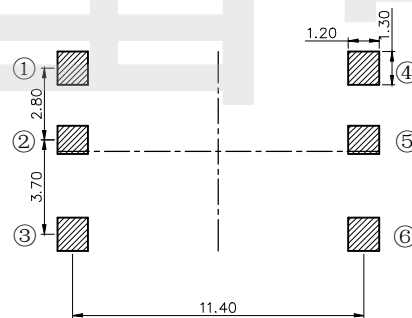
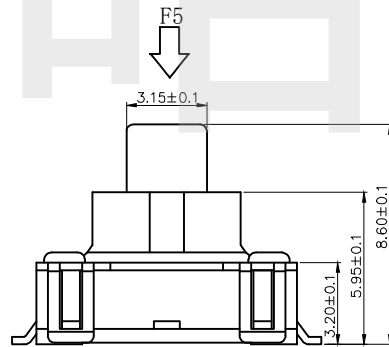
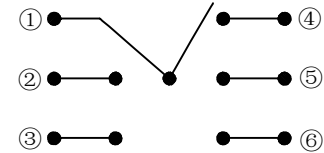


	1	2	3	4	5	6
F1	○			○		
F2	○	○				
F3	○					○
F4	○				○	
F5	○		○			



材料:

- A 按钮: 增强尼龙 (黑色)
- B 护套: LCP (黑色)
- C 盖子: 不锈钢 (白色)
- D 簧片: 复银不锈钢 (银白色)
- E 底座: LCP (黑色)
- D 卡件: 磷铜 (镀银 白色)

主要技术规格:

1. 额定值: 0.1A DC12V
2. 接触电阻: 100mΩ
3. 操作力: 4-150gf±50gf 250gf±50gf
4. 温度范围: -25℃ TO +70℃
5. 绝缘电阻: 100MΩ
6. 抗电强度: 100V 50HZ 1Min.
7. 寿命: 5万Cycles

HAOFU ELECTRONCS TECHNOLOGY CO.,LTD

COPYRIGHT RESERVED,PLEASE DO NOT COPY.

PART NAME		MULTI FUNCTION SWITCH		DRAWING		Y,C,ZHANG		DWG.No.		SBICL	
PART NO.		TD-1506SN-01 8.6H		CHECK		G.C.Chen		REV.		A1	
UNIT : mm	TOLERANCE	UP TO 5	±0.2	ANGLE	APPROVAL			DATE			
	OTHERWISE	ABOVE 5~30	±0.3		SCALE	2:1		PAGE		1 OF 1	