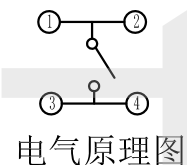
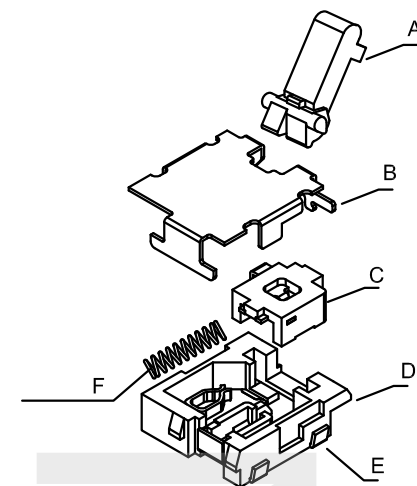
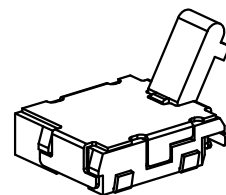
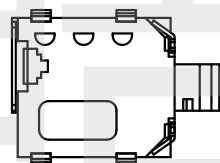
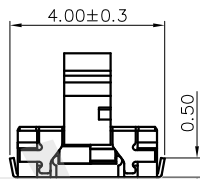
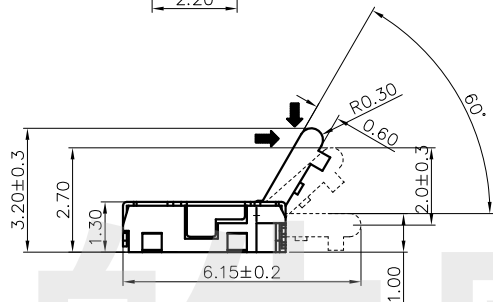
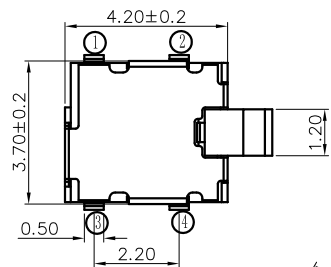


RoHS
Compliant



安装尺寸

项目	标准
电气性能	额定电流: 1mA
	额定电压: 5V DC
	接触电阻: 3Ω max.
	绝缘电阻: 100MΩ min.100V DC
机械性能	耐压强度: 100V AC (50/60Hz foy 1 minute)
	操作力度: 30±20gf
	工作寿命: 50000cycles
环境性能	总行程: 1.93mm±0.5mm
	温度范围: -40°C ~ +60°C.

NO.	零件名称 Part Name	Q'TY	材料 Material	镀涂 Plating coating	颜色 colour	备注 Remarks
F	弹簧	1	不锈钢丝	镀银	银白色	
E	嵌件	1	磷铜	镀银	银白色镶银	
D	底座	1	LCP	/	黑色	
C	滑块	1	进口增强尼龙	/	黑色	
B	盖子	1	不朽钢	/	原色	
A	按钮	1	进口增强尼龙	/	黑色	

HAOFU ELECTRONCS TECHNOLOGY CO.,LTD

COPYRIGHT RESERVED,PLEASE DO NOT COPY.

PART NAME		DETECTION SWITCH		DRAWING		Y,C,ZHANG		DWG.No.		SBICL	
PART NO.		TD-1621SA-02		CHECK		G.C.Chen		REV.		A1	
UNIT : mm	TOLERANCE	UP TO 5	±0.2	ANGLE	APPROVAL	SCALE	2:1	PAGE	DATE	1 OF 1	
	OTHERWISE	ABOVE 5 ~ 30	±0.3								σ±3'