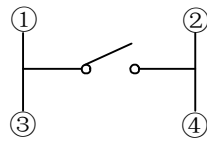
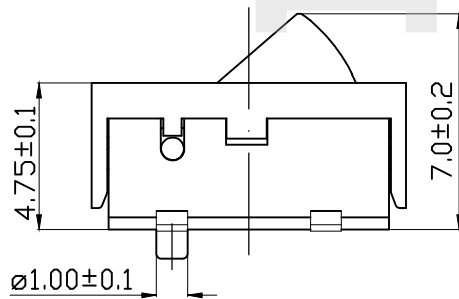
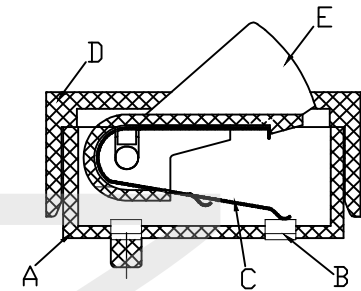


PCB. 焊接尺寸图



电气原理图

材料:

- A底座/基座: 进口LCP(黑色)
- B嵌件: 黄铜(镀银与银白色)
- C接触弹簧: 磷黄铜(镀银与银白色)
- D盖板: 进口增强尼龙(黑色)
- E按钮: 进口增强尼龙(黑色)

主要技术规格:

1. 额定值: 50mA DC12V
2. 接触电阻: $\leq 150m\Omega$
3. 操作力: $70gf \pm 40gf$
4. 行程: $0.5 \pm 0.3mm$
5. 绝缘电阻: $\geq 100M\Omega$
6. 耐压强度: AC250V 50Hz/1Min.
7. 寿命: 5万Cycles Min
8. 温度范围: $-25^{\circ}C$ TO $+70^{\circ}C$

HAOFU ELECTRONCS TECHNOLOGY CO.,LTD

COPYRIGHT RESERVED,PLEASE DO NOT COPY.

PART NAME		DETECTION SWITCH		DRAWING	Y,C,ZHANG	DWG.No.	SBICL
PART NO.		TD-1631SA-01		CHECK	G.C.Chen	REV.	A1
	UNIT :	TOLERANCE	UP TO 5	± 0.2	APPROVAL	DATE	PAGE
	mm		OTHERWISE	ABOVE 5~30			
			ABOVE 30	± 0.5	SCALE	2:1	1 OF 1
			ANGLE	$\pm 3'$			