

-NOTES-

1.Electrical:

Contact resistance: 50m ohms max.
Dielectric withstanding voltage: 250V RMS.
Insulation resistance: 1000M ohms min.

2.Mechanical:

MATE AND UNMATE FORCE:
MATE FORCE: 2.5kg MAX
UNMATE FORCE: 0.5kg MIN
Durability: 3000cycles MIN.

3.Environment:

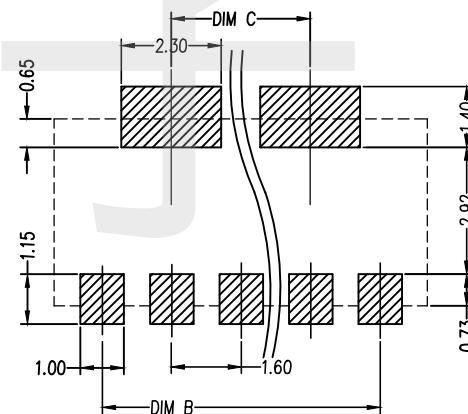
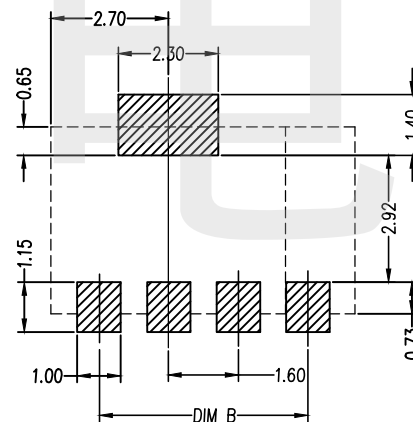
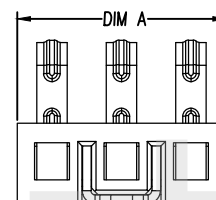
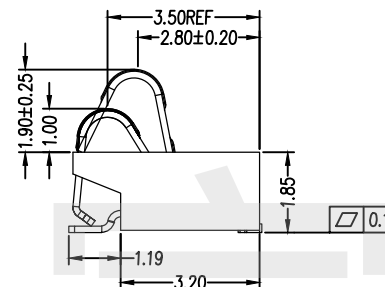
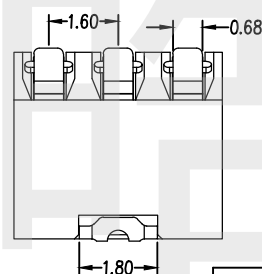
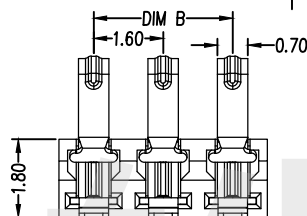
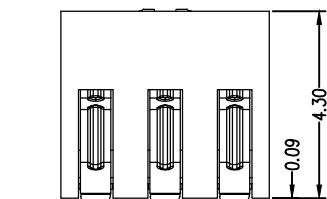
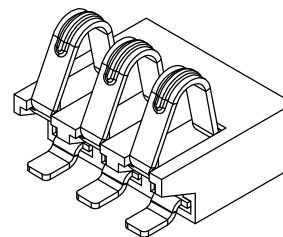
Operating Temperature: -55°to+105°

4.FINISH:

TERMINAL: GOLD Plated ALL Over NICKEL.

5.MATERIAL:

5.1.Housing: HI-TEMP Plastic,UL94V-0,black;
5.2.Terminal: Cobby alloy,T=0.15mm
5.3 Stator: Brass T=0.20mm



3&4PIN LAYOUT

5-10PIN LAYOUT

RECOMMENDED PCB LAYOUT

TOL:(±0.05)

BC10P16H180-R190	16.00	14.40	11.20
BC9P16H180-R190	14.40	12.80	9.60
BC8P16H180-R190	12.80	11.20	8.00
BC7P16H180-R190	11.20	9.60	6.40
BC6P16H180-R190	9.60	8.00	4.80
BC5P16H180-R190	8.00	6.40	3.20
BC4P16H180-R190	6.40	4.80	0
BC3P16H180-R190	4.80	3.20	0
BE FILED	DIMA	DIMB	DIMC

HAOFU ELECTRONCS TECHNOLOGY CO.,LTD

COPYRIGHT RESERVED,PLEASE DO NOT COPY.

PART NAME		CONNECTOR		DRAWING	Y,C,ZHANG	DWG.No.	SBICL
PART NO.		BCNP16H180-R190		CHECK	G.C.Chen	REV.	A1
UNIT : mm	TOLERANCE OTHERWISE	UP TO 5 ABOVE 5 ~30 ABOVE 30 ANGLE	±0.2 ±0.3 ±0.5 ±5°	APPROVAL		DATE	
	ANGLE	0°±3'	SCALE	2:1	PAGE	1 OF 1	