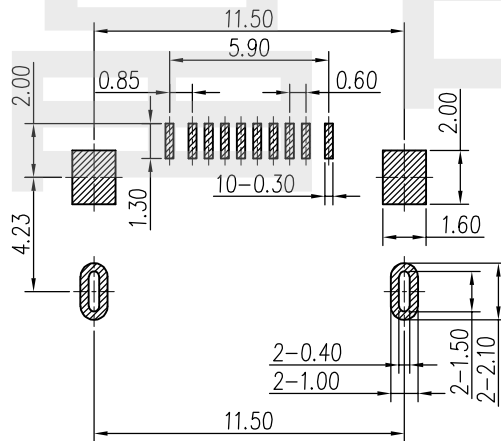
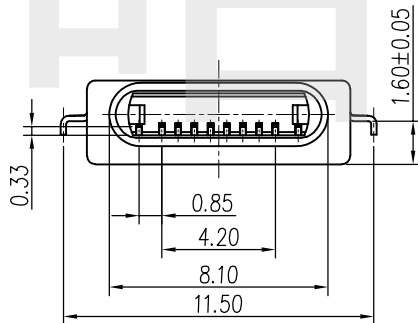
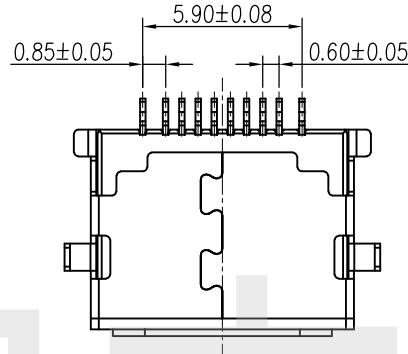
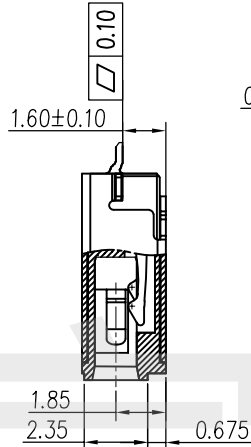
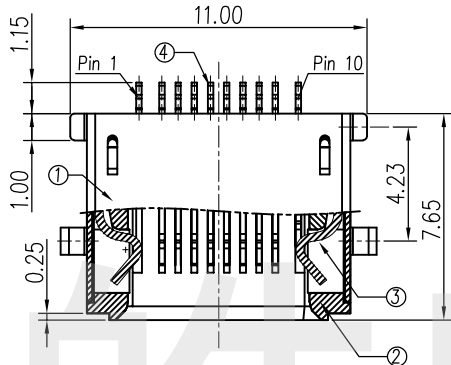
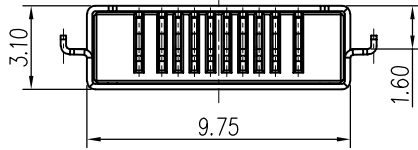


FOR REFERENCE ONLY

RoHS Compliant  
Halogen Free

SYMBOL	REV.	REVISION	APPROVAL	DATE



RECOMMENDED P.C.B HOLE LAYOUT  
COMPONENT SIDE VIEW(TOLERANCE: +/-0.05)

PIN NO.	NAME	PIN NO.	NAME
1	DETECT1	7	DN2
2	GND	8	DP2
3	DP1	9	ACC2
4	DN1	10	DETECT2
5	ACC1	Shell	GND
6	PWR IN		

规格:

1. 电气特性:

- 接触电流额定值: 1.5安培最大。
- 额定电压: 30 v Max.
- 介质耐压: 交流500V r. m. s.
- 绝缘电阻: 100 MΩ最低。
- 接触电阻: 50 mΩ最大值。

2. 环境:

- 工作温度: -25° C ~ + 85° C.

3所示. 机械特点:

- 插拔力: 15 nf Max.
- 退出力: 3 nf分钟。
- 耐久性Cycles: 5000 Cycles.

NO.	PN.	DESCRIPTION
1	5010-FGB003	FG 10PIN 1.6母座 黑色
2	5010-FGW004	FG 10PIN 1.6母座 白色
4	CONTACT	Copper Alloy; AuNi; T=0.20mm;
3	LATCH	Stainless Steel; SUS301, T=0.30mm;
2	HOUSING	LCP Thermoplastic, UL94V-0;
1	SHELL	Stainless Steel; SUS201, T=0.20mm;

**CIKI** 东莞市皓富电子科技有限公司  
DONGGUAN CITY HAOFU ELECTRONCS TECHNOLOGY CO.,LTD

COPYRIGHT RESERVED, PLEASE DO NOT COPY.

PART NAME	CONNECTOR	DRAWING	Z. L. Liang	DWG. No.	ST0015
PART NO.	FG 10PIN 沉板1.6母座	CHECK	G. C. Chen	REV.	A0
UNIT : mm	TOLERANCE UNLESS OTHERWISE SPECIFIED	ANGLE	G. C. Chen	DATE	2020-Oct-11
	X. X ± 0.3 X. XX ± 0.2 X. XXX ± 0.1	±2°	SCALE	1:1	PAGE 1 OF 1