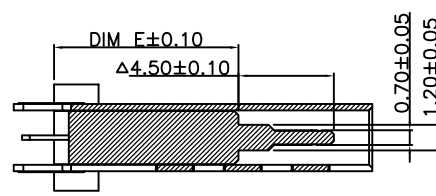
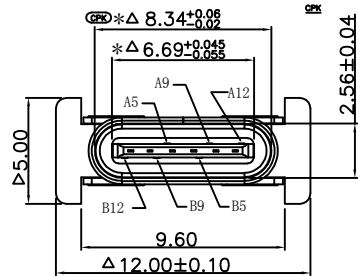


FOR REFERENCE ONLY

RoHS Compliant
Halogen Free

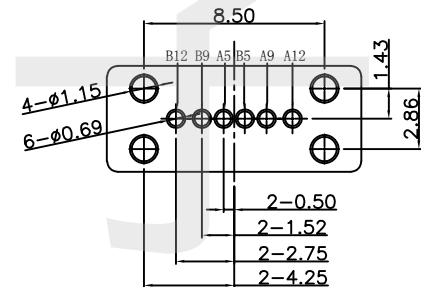
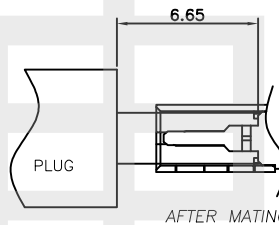
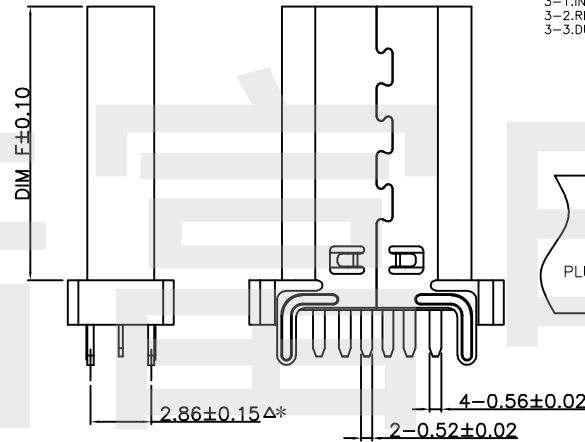
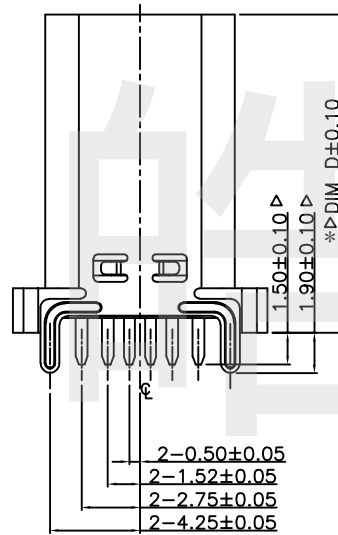
SYMBOL	REV.	REVISION	APPROVAL	DATE



NOTE1:

- MATERIAL SPECIFICATION:
 - HOUSING: HIGH TEMPERATURE RESISTANT PLASTIC, UL94 V-0.
 - CONTACTS: COPPER ALLOY
 - MID PLATE: STAINLESS STEEL
 - FRONT SHELL: STAINLESS STEEL
- PLATING SPECIFICATION:
 - CONTACTS:
 - 50μ" MIN. UNDER PLATED OVER ALL.
 - Au PLATED ON THE FUNCTIONAL AREA OF CONTACT.
 - FRONT SHELL:
 - (GOLD PLATING THICKNESS FOLLOW THE P/N)
 - PLATING SPECIFICATIONS OF THE SOLDER AREA FOLLOW THE P/N
- MECHANICAL PERFORMANCE:
 - INSERTION FORCE: 0.5~2.0kgf.
 - REMOVAL FORCE: 0.8kgf~2.0kgf.
 - DURABILITY: 2000 CYCLES.

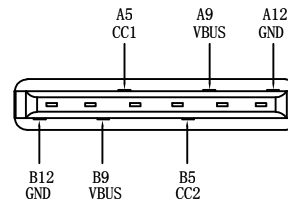
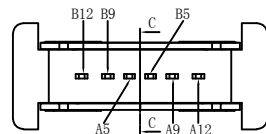
- ELECTRICAL PERFORMANCE:
 - CURRENT RATING: 3.0A
VOLTAGE RATING: 5.0V
 - LLCR:
 - VBUS & GND PINS AND OTHER PINS: 40mΩ/PIN MAX.
 - SHIELD: 50mΩ/MAX.
 - LLCR MAX. CHANGE OF ALL PINS: 10mΩ.
 - INSULATION RESISTANCE: 100MΩ MIN
 - DIELECTRIC WITHSTAND VOLTAGE: AC 100V FOR 1 MINUTE.
 - ENVIRONMENTAL PERFORMANCE:
 - OPERATING TEMPERATURE: -25°C~+85°C.
 - R REFLOW:
 - THE PEAK TEMPERATURE ON THE BOARD SHALL BE MAINTAINED FOR 10 SECONDS AT 260°C.
 - COMPLY WITH RoHS 2.0 AND REACH AND OTHER ENVIRONMENTAL PROTECTION REQUIREMENTS
8. 带"△"符号为重点管控尺寸
带"*"符号为巡检管控尺寸
带"⊕"符号为CPK管控尺寸



RECOMMENDED P.C.B. LAYOUT
TOLERANCE UNSPECIFIED ±0.05mm

NOTE2:

DIM D	DIM E	DIM F	PART No.
10.00	5.00	7.90	TYPE-C-6P-4DP-10.0
10.50	5.00	8.40	TYPE-C-6P-4DP-10.5
11.50	6.40	9.40	TYPE-C-6P-4DP-11.5
13.00	8.70	10.90	TYPE-C-6P-4DP-13.0
13.70	8.70	11.60	TYPE-C-6P-4DP-13.7
15.00	8.70	12.90	TYPE-C-6P-4DP-15.0



USB TYPE-C PIN ASSIGNMENTS

PIN NUMBER	SIGNAL NAME	PIN NUMBER	SIGNAL NAME
A12	GND	B12	GND
A9	VBUS	B9	VBUS
A5	CC1	B5	CC2

CIKI 东莞市皓富电子科技有限公司
DONGGUAN CITY HAOFU ELECTRONCS TECHNOLOGY CO.,LTD

COPYRIGHT RESERVED, PLEASE DO NOT COPY.

PART NAME		CONNECTOR		DRAWING	Z. L. Liang	DWG. No.	ST0015
PART NO.		TYPE-C-6P-4DP-H		CHECK	G. C. Chen	REV.	A0
UNIT : mm	TOLERANCE UNLESS OTHERWISE SPECIFIED	X. X ± 0.3	ANGLE ±2°	APPROVAL	G. C. Chen	DATE	2020-Oct-11
		X. XX ± 0.2		SCALE	1:1	PAGE	1 OF 1
		X. XXX ± 0.1					