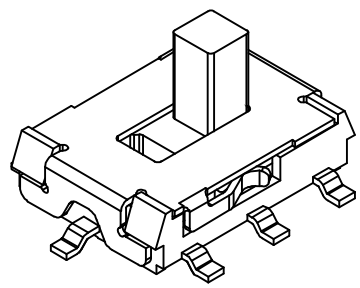
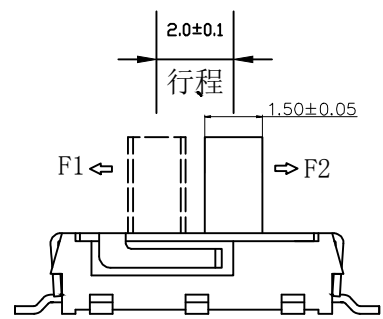
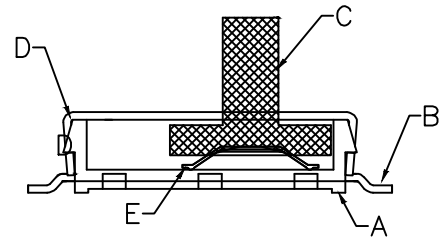
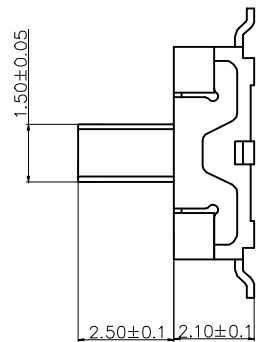
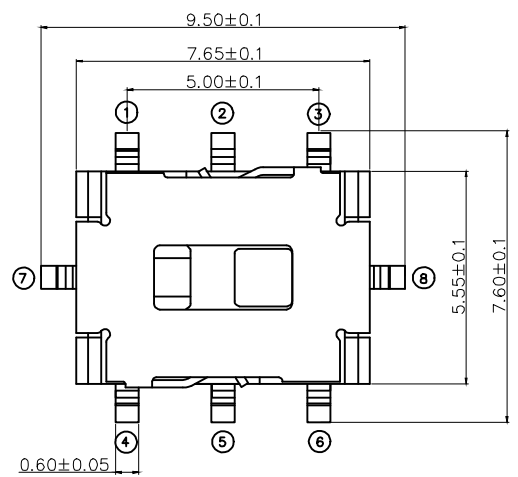
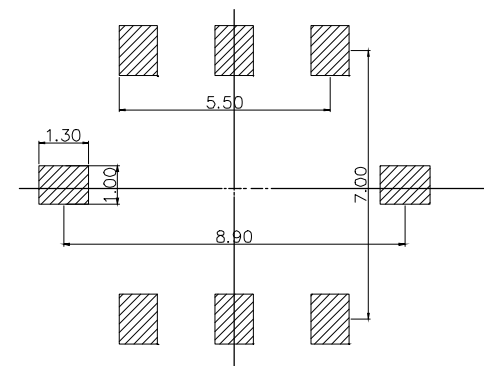
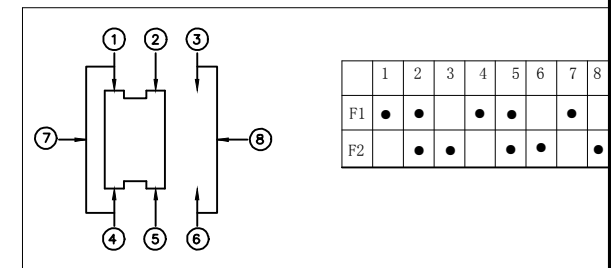


电路图



- 材料:
- A底座: LCP(黑色)
 - B嵌件: 黄铜(镀银与银白色)
 - C桃心: PPA(黑色)
 - D盖板: 不锈钢(清洗)
 - E按钮: 复银铜(银白色)

- 主要技术规格:
1. 额定值: 50mA DC12V
 2. 接触电阻: ≤50mΩ
 3. 操作力: 200gf±100gf
 4. 行程: 2.0±0.2mm
 5. 绝缘电阻: ≥100MΩ
 6. 耐压强度: AC250V 50Hz/1Min.
 7. 寿命: 1万Cycles Min
 8. 温度范围: -30℃ T0 +80℃

HAOFU ELECTRONCS TECHNOLOGY CO.,LTD

COPYRIGHT RESERVED,PLEASE DO NOT COPY.

| | | | | | | | | | | | |
|-----------|------------------------|------------|------|---------|----------|-----------|--|------------|--|-------|--|
| PART NAME | | SWITCH | | DRAWING | | Y,C,ZHANG | | DWG.No. | | SBICL | |
| PART NO. | | MSK-2276S | | CHECK | | G.C.Chen | | REV. | | A1 | |
| UNIT : | TOLERANCE OTHERWISE | UP TO 5 | ±0.2 | ANGLE | APPROVAL | DATE | | 14-03-2013 | | | |
| | | ABOVE 5~30 | ±0.3 | | | PAGE | | 1 OF 1 | | | |
| mm | | ABOVE 30 | ±0.5 | 0°±3' | SCALE | 2:1 | | | | | |