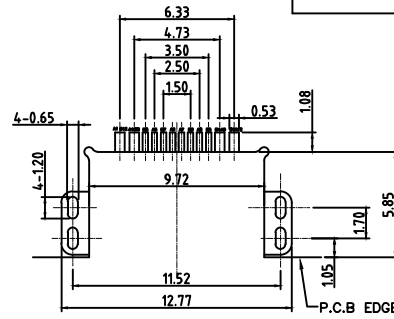
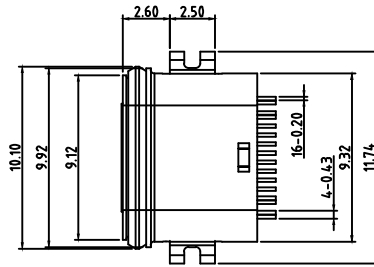
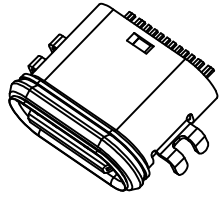


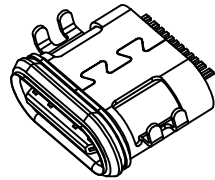
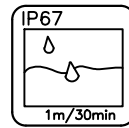
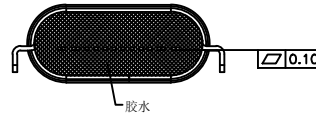
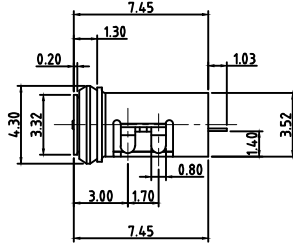
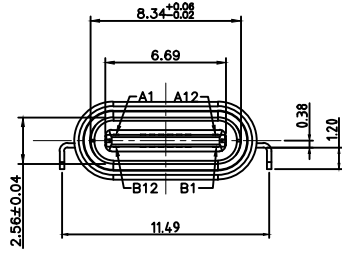
RoHS Compliant  
Halogen Free

SYMBOL	REV.	REVISION	APPROVAL	DATE



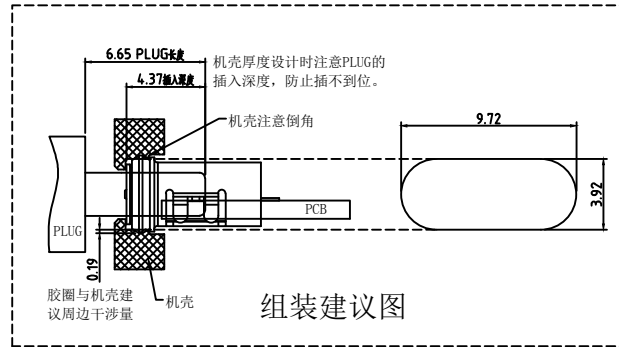
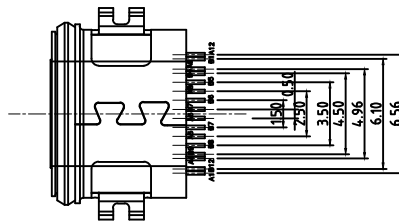
RECOMMENDED PCB LAYOUT(TOP VIEW)  
DEFAULT TOLERANCE:±0.05

- MATERIAL SPECIFICATION:
  - HOUSING:HIGH TEMPERATURE RESISTANT PLASTIC,UL94 V-0.
  - CONTACTS:COPPER ALLOY
  - MID PLATE: STAINLESS STEEL
  - FRONT SHELL: STAINLESS STEEL
- MECHANICAL PERFORMANCE:
  - INSERTION FORCE: 5~20N.
  - REMOVAL FORCE: 6~20N.
  - DURABILITY: 10000 CYCLES.
- ELECTRICAL PERFORMANCE:
  - CURRENT RATING:3.0A  
VOLTAGE RATING:12V
  - LLCR:  
VBUS & GND PINS AND OTHER PINS: 40mΩ/PIN MAX.  
SHIELD: 50mΩ/MAX.
  - INSULATION RESISTANCE: 100MΩ MIN
  - DIELECTRIC WITHSTAND VOLTAGE,AC 100V FOR 1 MINUTE.
- ENVIRONMENTAL PERFORMANCE:
  - OPERATING TEMPERATURE: -25°C~+85°C.
  - IR REFLOW:  
THE PEAK TEMPERATURE ON THE BOARD SHALL  
BE MAINTAINED FOR 10 SECONDS AT 260°C.
  - DUSTPROOF AND WATERPROOF GRADE IP67.



USB TYPE-C PIN ASSIGNMENTS

PIN NUMBER	SIGNAL NAME	PIN NUMBER	SIGNAL NAME
A1	GND	B12	GND
A4	VBUS	B9	VBUS
A5	CC1	B8	SBU2
A6	Dp1	B7	Dn2
A7	Dn1	B6	Dp2
A8	SBU1	B5	CC2
A9	VBUS	B4	VBUS
A12	GND	B1	GND



LOGO	SHELL	CONTACT	SOLDER	PAKING	SHELL MATERIAL
	NI	3u" Au	Fu" Au	REEL	SUS

CIKI 东莞市皓富电子科技有限公司  
DONGGUAN CITY HAOFU ELECTRONICS TECHNOLOGY CO.,

PART NAME	TYPE-C CONNECTOR	DRAWING	Z. L. Liang	DWG. No.	
PART NO.	TYPE-C 16P CL0.3四脚沉板1.4防水IP67母座	CHECK	G. C. Chen	REV.	A0
UNIT :	TOLERANCE UNLESS OTHERWISE SPECIFIED	ANGLE	G. C. Chen	DATE	
mm	X. X ± 0.3 X. XX ± 0.2 X. XXX ± 0.1	±2°	SCALE	1:1	PAGE
					1 OF 1

COPYRIGHT RESERVED, PLEASE DO NOT COPY.