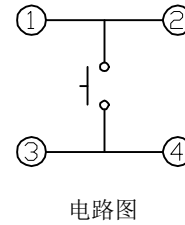
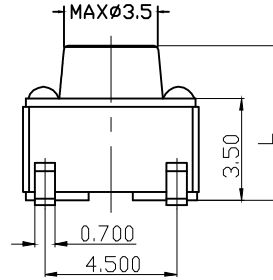
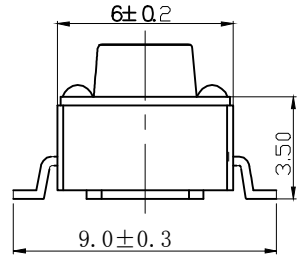


FOR REFERENCE ONLY

RoHS Compliant
Halogen Free

SYMBOL	REV.	REVISION	APPROVAL	DATE



规格型号			
Model NO.	L=	Model NO.	L=
TD-06XA	4.3	TD-06XL	8.5
TD-06XM	4.5	TD-06XN	9.0
TD-06XB	5.0	TD-06XJ	10.0
TD-06XC	5.5	TD-06XQ	11.0
TD-06XD	6.0	TD-06XW	11.5
TD-06XE	6.5	TD-06XV	12.5
TD-06XF	7.0	TD-06XU	13.0
TD-06XG	7.5	TD-06XD	13.5
TD-06XH	8.0	TD-06XP	14.0
TD-06XI	9.5	TD-06XY	14.5
TD-06XK	10.5	TD-06XT	15.0
TD-06XZ	12.0	TD-06XR	15.5

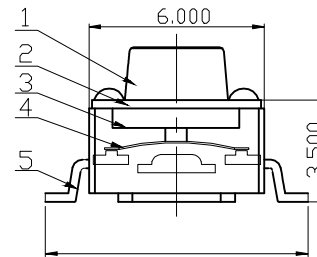
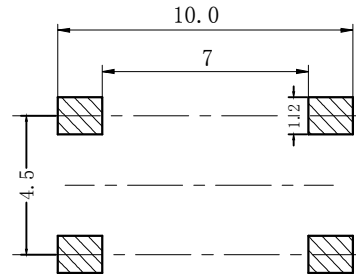
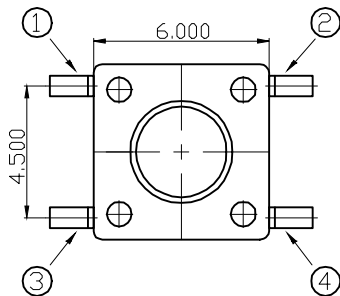
主要技术规格:

1. 额定值: 50mA DC12V
2. 接触电阻: 50mΩ
3. 操作力: 100/160/260gf±50gf
4. 行程: 0.25±0.1mm
5. 绝缘电阻: 100MΩ
6. 抗电强度: 250V 50HZ 1min.
7. 寿命: 10万Cycles

材料:

- 1按钮: PPA (黑色)
- 2盖板: 不锈钢 (镀锡)
- 3底座: PPA (黑色)
- 4簧片: 不锈钢 (覆银)
- 5端子: 黄铜 (镀银)

元件面孔位图



CIKI 东莞市皓富电子科技有限公司
DONGGUAN CITY HAOFU ELECTRONICS TECHNOLOGY CO., LTD

COPYRIGHT RESERVED, PLEASE DO NOT COPY.

PART NAME	SWITCH		DRAWING	Z. L. Liang	DWG. No.	ST0015
PART NO.	TD-06XQ		CHECK	G. C. Chen	REV.	A0
UNIT : mm	TOLERANCE UNLESS OTHERWISE SPECIFIED	X. X ± 0.3 X. XX ± 0.2 X. XXX ± 0.1	ANGLE	G. C. Chen	DATE	2020-Oct-11
			±2°	SCALE	1:1	PAGE