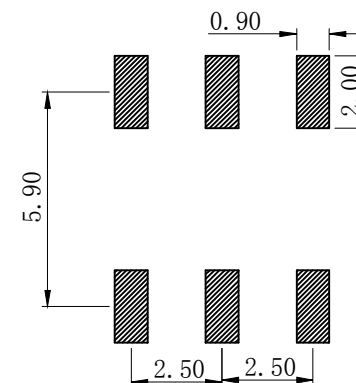
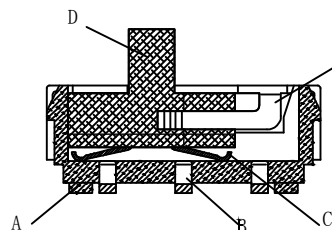
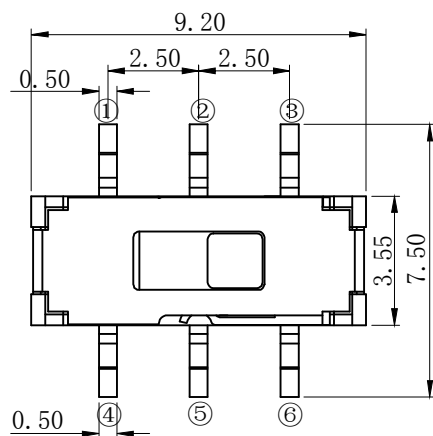
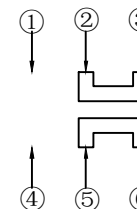


MODLE	
PART NO	H
F	2
K	3
L	4



材料:

- A底座/基座: LCP(黑色)
- B嵌件: 黄铜(整体镀银与银白色)
- C簧片: 铍青铜(整体镀银与银白色)
- D手柄: PPA(黑色)
- E盖板: 不锈钢(整体清洗与原色)

主要技术规格:

1. 额定值: 50mA
2. 接触电阻: $\leq 70m\Omega$
3. 操作力: $200gf \pm 50gf$
4. 行程: $2.0 \pm 0.1mm$
5. 绝缘电阻: $\geq 100M\Omega$
6. 耐压强度: AC250V 50HZ/ 1Min.
7. 寿命: 5万Cycles Min
8. 额定电压: DC 12V

HAOFU ELECTRONCS TECHNOLOGY CO.,LTD

COPYRIGHT RESERVED,PLEASE DO NOT COPY.

PART NAME		SWITCH		DRAWING		Y,C,ZHANG	DWG.No.	SBICL
PART NO.		MSS-22D27-X		CHECK		G.C.Chen	REV.	A1
	UNIT :	TOLERANCE	UP TO 5	± 0.2	ANGLE	APPROVAL	DATE	14-03-2013
	mm		OTHERWISE	ABOVE 5 ~30				
			ABOVE 30	± 0.5		SCALE	PAGE	1 OF 1
			ANGLE	$\pm 3'$		2:1		