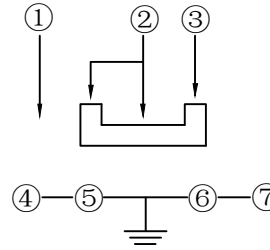
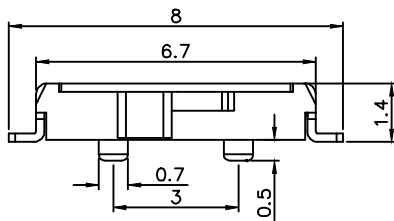
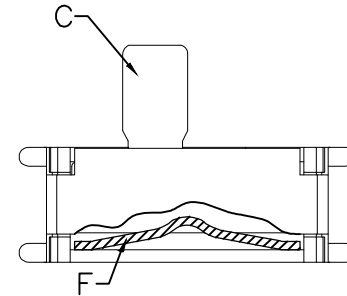
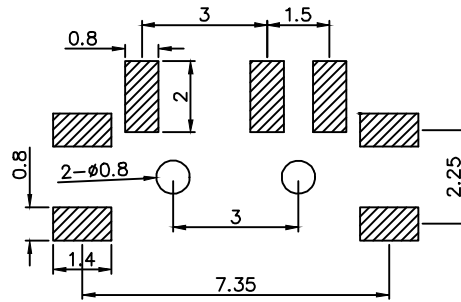
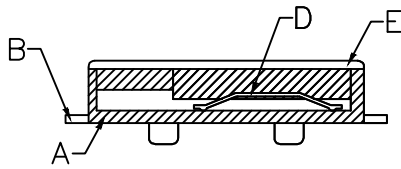
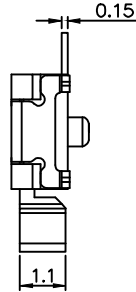
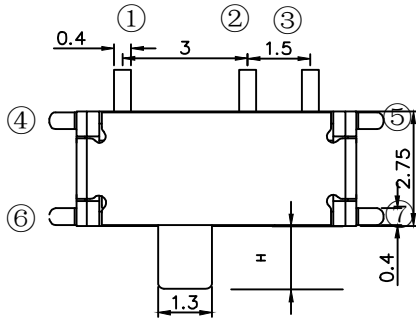


原理图



MODLE	
PART NO	H
MSK-1296S-E	1.5
MSK-1296S-J	2.5



材料:

- A底座/基座: LCP(黑色)
- B嵌件: 磷铜(整体镀银与银白色)
- C桃心: 高温尼龙(白色)
- D簧片: 铍青铜(整体镀银与银白色)
- E盖板: C5191R(整体镀银)
- F弹条: 不锈钢(整体清洗与银白色)

主要技术规格:

1. 额定值: 50mA MAX
2. 接触电阻: $\leq 70m\Omega$
3. 操作力: $180gf \pm 50gf$
4. 行程: $1.5 \pm 0.2mm$
5. 绝缘电阻: $\geq 100M\Omega$
6. 耐压强度: AC250V 50HZ/ 1Min.
7. 寿命: 1万Cycles Min
8. 额定电压: DC 12V

HAOFU ELECTRONCS TECHNOLOGY CO.,LTD

COPYRIGHT RESERVED,PLEASE DO NOT COPY.

PART NAME		SWITCH			DRAWING	Y,C,ZHANG	DWG.No.	SBICL
PART NO.		MSK-1296S-X			CHECK	G.C.Chen	REV.	A1
UNIT : mm	TOLERANCE	UP TO 5	± 0.2	ANGLE	APPROVAL	DATE	PAGE	14-03-2013
	OTHERWISE	ABOVE 5 ~ 30	± 0.3					
SCALE		2:1			1 OF 1			