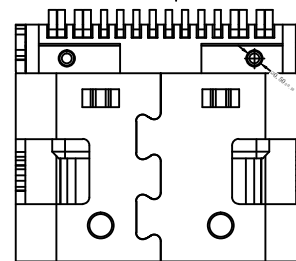
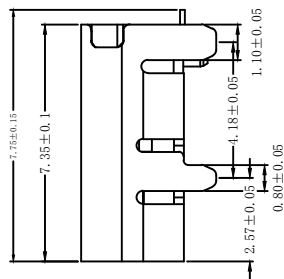
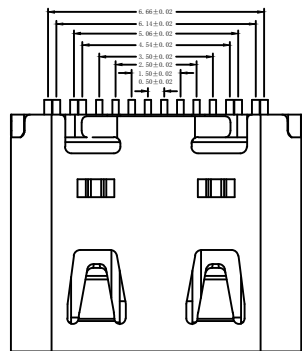
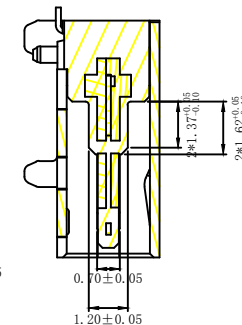
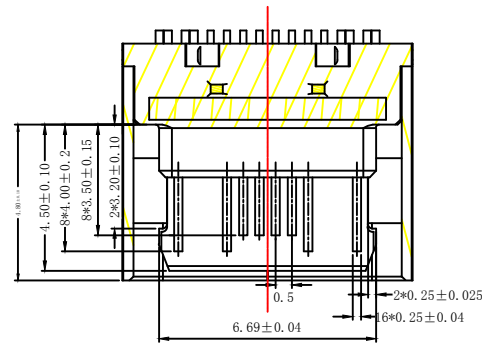
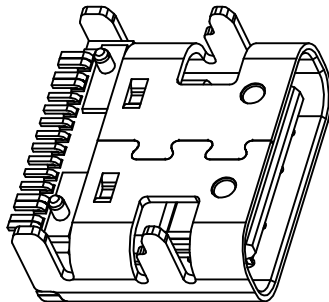
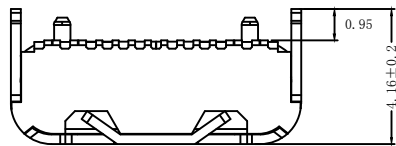


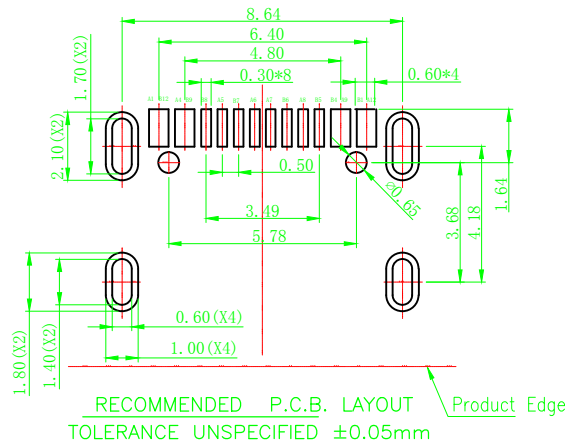
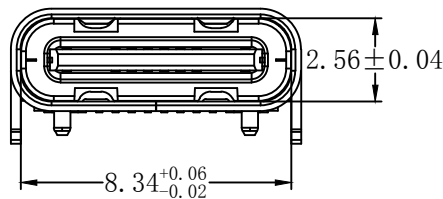
RoHS Compliant

SYMBOL	REV.	REVISION	APPROVAL	DATE



Remarks:

- Material:
  - Rubber core: LCP+30% G.FUL94V-0
  - Terminal: High conductivity copper C7025; Nickel bottom 50U MIN. Contact area gold plating (AU 0.5u "MIN) Welding area gold plating G/F
  - Shell: SUS304, T=0.30mm; Surface nickel plating 50U "MIN
  - Middle clip: SUS301;
- Main features:
  - Rated current: 5A
  - Contact impedance: 40m Ω MAX (initial value) 50m Ω MAX (after testing)
  - Insulation impedance: 100MΩ
  - Voltage withstand test: 100V AC R.M.S
  - Overall insertion force: 5-20N Overall insertion force: 5-20N (after durability) Overall pull-out force: 8-20N Overall pull-out force: 6-20N (after durability)
  - Durability: 10000 times
  - High temperature resistance: SMT reflow soldering (peak value 260 ° ± 5 ° ), plastic must not have bubbles, Poor adhesion, discoloration, and warping deformation within the tolerance range;
  - The product must undergo soldering testing, with a soldering area of over 95%;
- Salt spray test: 24h MIN
- Working temperature: -30 °C ~ 85 °C



A1	GND	B12	GND
A4	VBUS	B9	VBUS
A5	CC1	B8	SBU2
A6	DP1	B7	DN2
A7	DN1	B6	DP2
A8	SBU1	B5	CC2
A9	VBUS	B4	VBUS
A12	GND	B1	GND
PIN	SIGNAL NAME	PIN	SIGNAL NAME

**CIKI** 东莞市皓富电子科技有限公司  
DONGGUAN HAOFU ELECTRONIC TECHNOLOGY CO., LTD

COPYRIGHT RESERVED, PLEASE DO NOT COPY.

PART NAME	TYPE-C 16P FEMALE		DRAWING	Z. L. Liang	DWG. No.	
PART NO.	HF-CF-A-20		CHECK	G. C. Chen	REV.	A0
UNIT : mm	TOLERANCE UNLESS OTHERWISE SPECIFIED	X. X ± 0.3 X. XX ± 0.2 X. XXX ± 0.1	ANGLE	G. C. Chen	DATE	
			±2°	SCALE	1:1	PAGE 1 OF 1