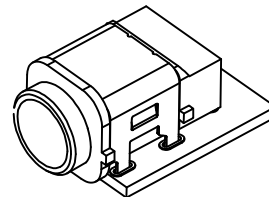
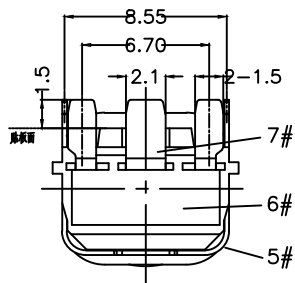
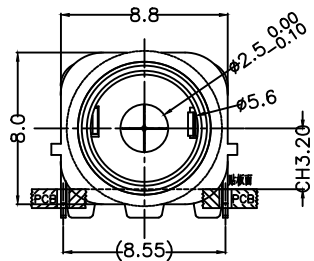


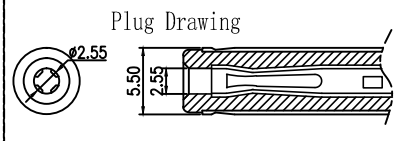
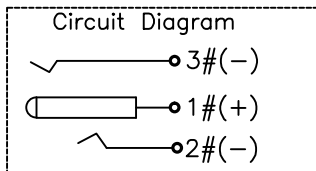
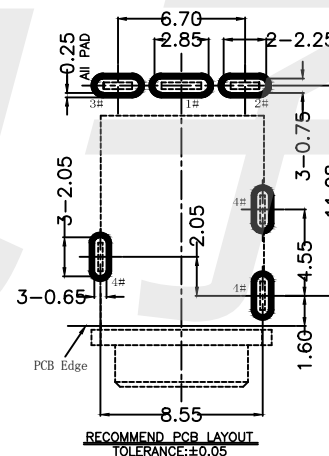
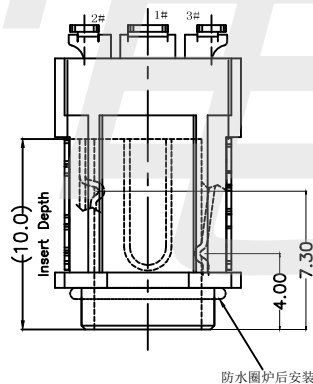
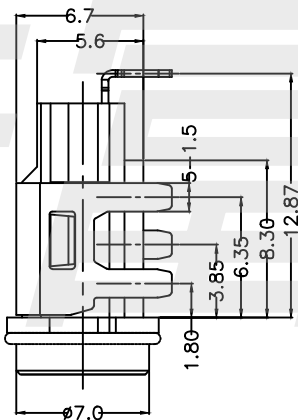
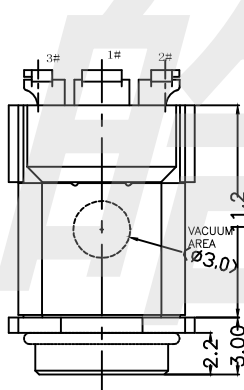
RoHS Compliant

SYMBOL	REV.	REVISION	APPROVAL	DATE



Notes:

- 1.Current Rating: 24V&10A Max.
- 2.Contact Resistance: 50mOhms Max.(initial)
- 3.Insulation Resistance: 100M Ohms Min./500V DC
- 4.Dielectric Withstanding Voltage: 500V AC/1Minute
- 5.Mating Force: 35N Max, Withdrawal Force: 3N Min.
- 6.Durability: 5,000 Cycles
- 7.Operating Temperature: -25°C to +85°C



7	BOND	EPOXY	Black
6	Cover	Hight. Thermoplastics	Black;UL 94-V0
5	Housing		
4	Shell		
3	Switch(-)	Copper Alloy	Ni Plated OverAll
2	Spring(-)		
	Center Pin(+)		
Item	Name	Material	Description

**CIKI** 东莞市皓富电子科技有限公司  
DONGGUAN HAOFU ELECTRONIC TECHNOLOGY CO., LTD

COPYRIGHT RESERVED, PLEASE DO NOT COPY.

PART NAME	Waterproof DC JACK		DRAWING	Z. L. Liang	DWG. No.	
PART NO.	DC-5275-WP		CHECK	G. C. Chen	REV.	A0
UNIT :	TOLERANCE UNLESS OTHERWISE SPECIFIED	X. X ± 0.3 X. XX ± 0.2 X. XXX ± 0.1	ANGLE	G. C. Chen	DATE	
mm			±2°	SCALE	1:1	PAGE 1 OF 1