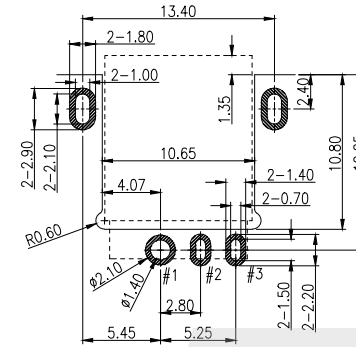
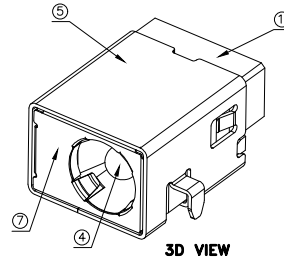
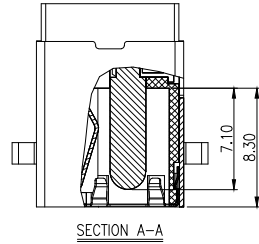
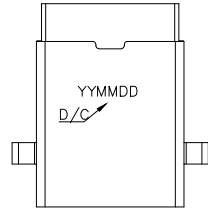


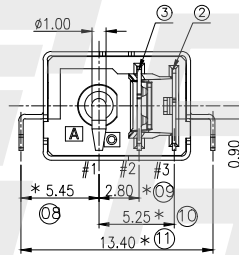
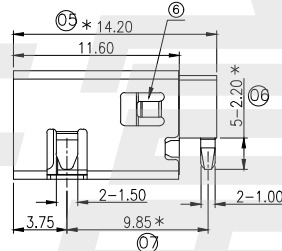
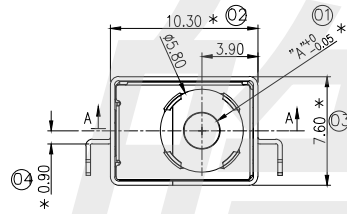
RoHS Compliant



A	NEW	2018.08.26	陈桂昌
B	新增ø2.0规格	2018.11.24	陈桂昌
C	新增ø1.65规格	2020.04.01	陈桂昌
D	变更中心针材质	2021.01.06	陈桂昌

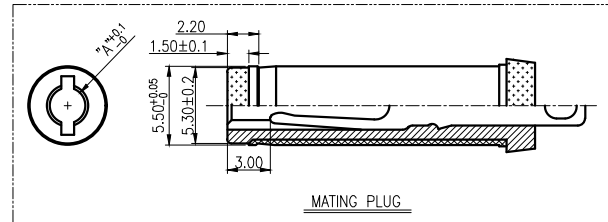
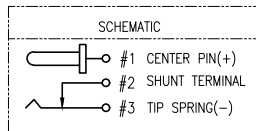


PCB LAYOUT TOP VIEW  
TOLERANCES:±0.05



YYMMDD  
DD:DAY  
MM:MONTH  
YY:YEAR

料号	"A"
DC-5916-257	ø2.5
DC-5916-207	ø2.0
DC-5916-177	ø1.65



SPECIFICATIONS:

- ELECTRICAL CHARACTERISTICS:
  - RATING: DC 20V, 10A .
  - CONTACT RESISTANCE: 30 mΩ Max. (INITIAL)
  - DIELECTRIC WITHSTANDING VOLTAGE: 500V AC FOR ONE MINUTE.
  - INSULATION RESISTANCE: 100 MΩ Min.MEASURED BY 500V DC.
- MECHANICAL CHARACTERISTICS:
  - INSERTION FORCE : 3.0 KGF Max.
  - WITHDRAWAL FORCE : 0.5 KGF Min.
- LIFE TEST: 5000 CYCLES MIN.

QTY	MATERIAL(THICK)	PLATING(COLOR)		
⑦ SEALED PLATE 1	SUS301	N/A		
⑥ COVER 1	LCP UL 94V-0 (HF)	Black		
⑤ SHELL 1	C2680R-EH	Ni 50U"		
④ CENTER PIN(+) 1	HBI59-1 △	Gold Flash Over Ni 50U"		
③ SHUNT TERMINAL 1	C2680R-EH	Gold Flash On Contact Area; 100U" Sn On Solder Tail; All Over Ni 50U" Min.		
② TIP SPRING(-) 1	CS210R-EH			
① HOUSING 1	LCP UL 94V-0 (HF)	Black		
No.	PART NAME	QTY	MATERIAL(THICK)	PLATING(COLOR)

**CIKI** 东莞市皓富电子科技有限公司  
DONGGUAN HAOFU ELECTRONIC TECHNOLOGY CO., LTD

COPYRIGHT RESERVED,PLEASE DO NOT COPY.

PART NAME	DC POWER JACK		DRAWING	Z.L.Liang	DWG.No.	
PART NO.	DC-5916-2X7		CHECK	G.C.Chen	REV.	A0
UNIT:	TOLERANCE UNLESS OTHERWISE SPECIFIED	X.X ± 0.3 X.XX ± 0.2 X.XXX ± 0.1	ANGLE	G.C.Chen	DATE	
mm			±2°	SCALE	1:1	PAGE 1 OF 1

F E D C B A